



KCHEA Begins...



- Kentucky Guild project to document it's early history via oral history video interviews

- First Meeting
January 8, 2008,
Berea, Kentucky

- Incorporated,
May 28, 2008



No Bricks and Mortar



Existing Archives

- ❖ Higher Education
- ❖ Historical Societies

Existing Museums

- ❖ Art
- ❖ History



First Steps

- **EXPANDED THE VISION**

Beyond the Kentucky Guild and Oral History Interviews

- **ESTABLISHED LEADERSHIP**

Founding board members represented group of working artists and organizational members with extensive experience and knowledge of craft in Kentucky.

- **CONSULTED AND UTILIZED EXPERTS**

Shared ideas and gathered feedback from trusted institution leaders working toward future partnerships

- **VISIONED AND PLANNED**

Established value statements, organizational goals, developed strategic and business plans



Mission

The Kentucky Craft History and Education Association gathers, conserves and presents the history and on-going impact of crafts in Kentucky.



Value Statements

There is an inherent value in the making of craft which embodies both skill and design; many skills are intrinsic in rural culture and have historically been part of essential living.



Value Statements

Kentucky has a long and rich craft heritage involving both the makers and organizations of craft that have created both an economic and cultural impact resulting in national and international recognition for the state as a model for craft development.



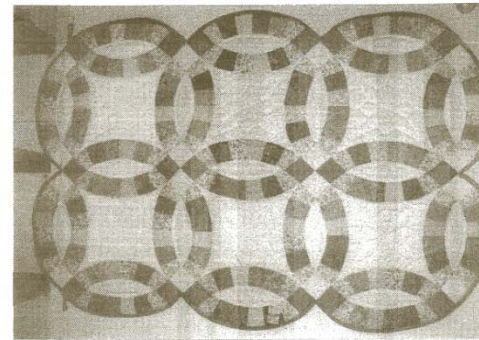
Value Statements

History provides valuable lessons that impact our future and documenting and sharing Kentucky's craft history honors the makers and creates pride in our heritage.

Arts & Crafts

Preserving Mountain Craftsmanship-- David Appalachian Crafts

Article & Photographs by Thelma R. Crawford



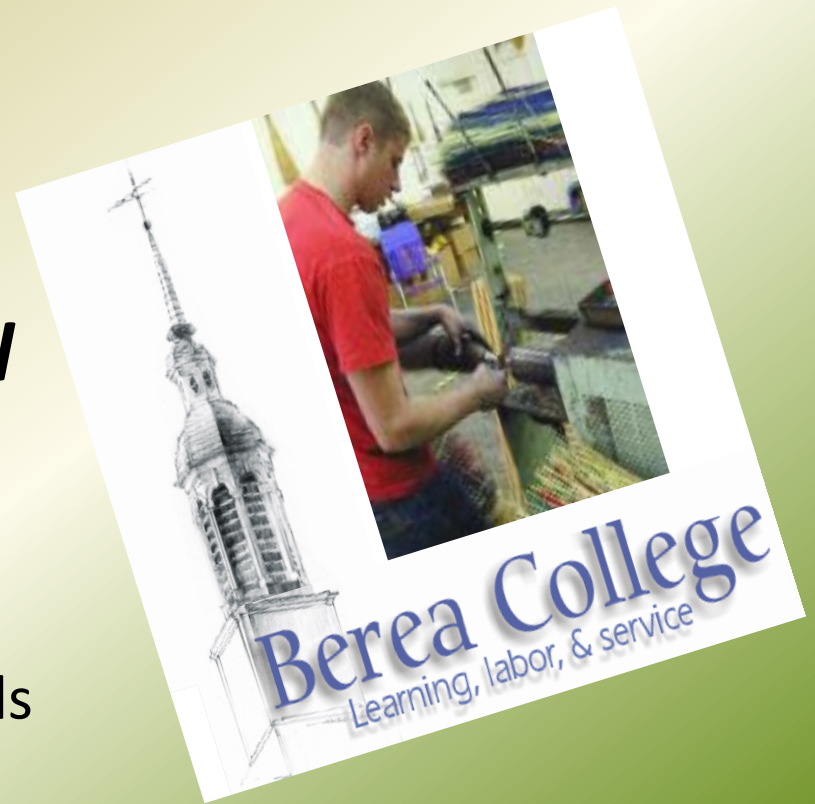
This group of crafters in Floyd County, Kentucky can boast of such customers as Johnny Carson, former Kentucky First Lady Phyllis George Brown and actress Lee Meriweather. Their talents were recognized by President Jimmy Carter in the late 1970s. And their abilities were even utilized to make a hand-stitched quilt of the 1984 Olympics emblem. And the work goes on....

The story of how David Appalachian Crafts came to be is not unlike one of their own finely made quilts, slowly coming together piece by piece through great care and intricate stitching. Except, in this case, the thread has not been cut on the last stitch. The work goes on, as it has since DAC was founded in 1972. The community of David is located just a few

miles away from the city of Prestonsburg along Highway 404. It was once the winter camping ground of Daniel Boone. It was also noted in the 19th Century for its salt lick. For much of the 20th Century it was small coal mining community. These days, you could say that the people of David remain a "close-knit" group. Since the early 1970s the "ladies of David"

Value Statements

The arts offer many educational and economic benefits and support the development of intellectual skills. Crafts can play a role in education through a variety of academic disciplines connecting students to craft artists as role models and educating them to craft as a vocational and lifestyle choice.



Value Statements

The documentation and preservation of Kentucky's craft history is needed and urgent

and is best done through the artifacts, documents, and stories told by craft makers and organizational leaders that have most significantly impacted the state's craft movement.



Joanna Hay Productions

GOALS

GOAL I: Develop strong organizational capacity to promote KCHEA mission.

GOAL II: Create a strong image for marketing.

GOAL III: Facilitate and support the research and documentation of Kentucky's craft history and make it available to many populations.

GOAL IV: Partner with other organizations in crafts, the arts, education and humanities to preserve and present Kentucky's craft history.

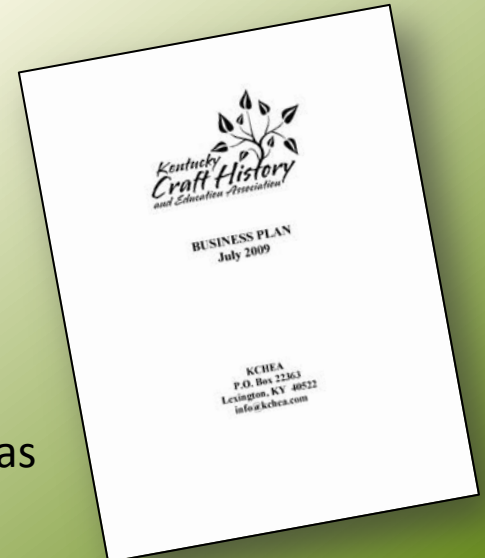
GOAL V: Serve as a national model for collecting and for documenting the craftspeople, written information and objects of our state's history.

GOAL VI: Present the history of crafts so that all Kentuckians take pride in our long, diverse and continuing craft traditions.

Accomplishments:

GOAL I: Develop strong organizational capacity to promote KCHEA mission.

- Assessed board skills and educational needs.
- Established operational procedures based on best practices to focus board and direct activities in a consistent manner.
- Joined member associations to both expand board skills and generate credibility.
- Established a culture of planning, review and assessment in order to focus on activities, learn and improve.
- Developed Fundraising Plans for priority projects. Invited several leaders instrumental in recent craft movement to serve as honorary founders.



Accomplishments:

GOAL II: Create a strong image for marketing.

- Developed **LOGO** and consistent branding in all visuals and communications
- Presented about KCHEA at Arts, History, Museum, and Appalachian conferences.
- Developed printed **BROCHURES** for use in promotional and fundraising efforts
- Developed **WEB SITE** and maintained consistent updates, **Kchea.org**



Accomplishments:

GOAL III: Facilitate and support the research and documentation of Kentucky's craft history and make it available to many populations.

- Completed more than 70 “Craft Luminary” oral history video interviews.
- Utilized experts in the field to provide board with knowledge and best practice models in the development of programming.
- Established the creation of a virtual “Kentucky Craft Encyclopedia” as a priority for current board activity.
- Facilitated placement of craft archival material in proper repositories and provided assistance and support to others.



Accomplishments:

GOAL IV: Partner with other organizations in crafts, the arts, education and humanities to preserve and present Kentucky's craft history.

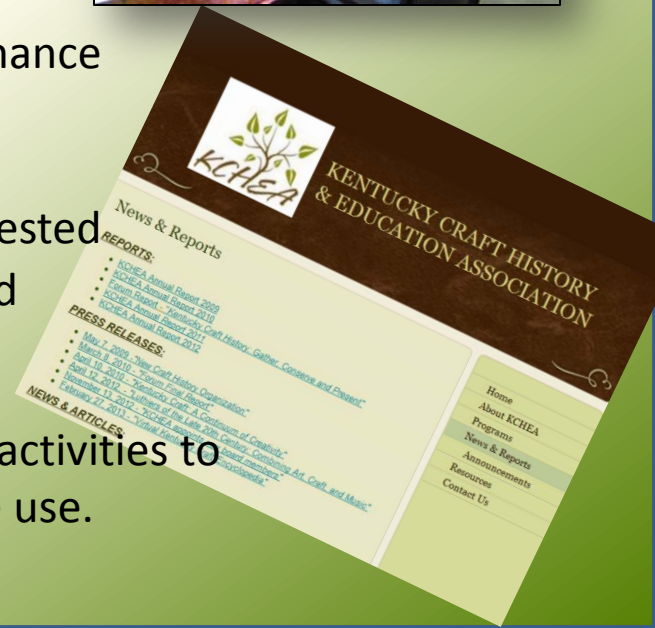
- Funding and Programming Partners: LexArts, Kentucky Arts Council, Kentucky Oral History Commission, Lexington Library, Kentucky Artisan Center at Berea, Kentucky Museum of Art & Craft, Kentucky Folklife Program,/KHS, Morehead Center for Traditional Music.
- Planning Partners: Kentucky Folklife Program /WKU, University of Kentucky Special Collections, Morehead State University History Department.



Accomplishments:

GOAL V: Serve as a national model for collecting and for documenting the craftspeople, written information and objects of our state's history.

- Established policies for the documentation of programming and board activities.
- Established standardized procedures for ongoing maintenance and digitized retention of KCHEA materials.
- Made KCHEA information and materials available to interested groups, via the web and through conferences, meetings and presentations.
- Conducted ongoing assessment and evaluation of KCHEA activities to identify areas for improvement and to document for future use.



GOALS

GOAL VI: Present the history of crafts so that all Kentuckians take pride in our long, diverse and continuing craft traditions.

- **Craft Luminary Project** – Digitation and transcription of 62 oral history videos available online, at Kentucky Historical Society. Clips from three on YouTube and KCHEA.org.
- **Kentucky Craft History Forum** – “Gather, Conserve and Present”. Input from Arts, History, Archival community on how to best identify and document the people, paper and objects associated with Kentucky Craft History.



KCHEA KENTUCKY CRAFT HISTORY: Gather, Conserve, Present

You are invited to attend this special forum being presented by the Kentucky Craft History and Education Association (KCHEA). The purpose of the forum will be to identify the many ways in which organizations and individuals can work together to gather, conserve and present the state's unique craft history.

The agenda will include a short presentation on KCHEA and our goals. After lunch we will be break into groups according to our special interests in collecting information about crafts — other people, people, or objects. Then the individual groups will consider how their own perspectives can help in gathering, conserving, and presenting craft history and report to the whole group. The working sessions will explore ways that we can cooperate to present Kentucky craft history to the citizens of our state.

November 13, 2009
Registration, 9:30 a.m. to 4 p.m.
Forums, 10 a.m. to 4 p.m.
ArtPlace
161 North 10th Street
Lexington, KY 40507

Registration fee:
Individuals: \$25
Affiliated: \$25
Non-Affiliated: \$15

INFORMATION CONTACT:
Patricia Allen, Forum Chair
410-275-4010
allen@kchea.org

SPONSORS:

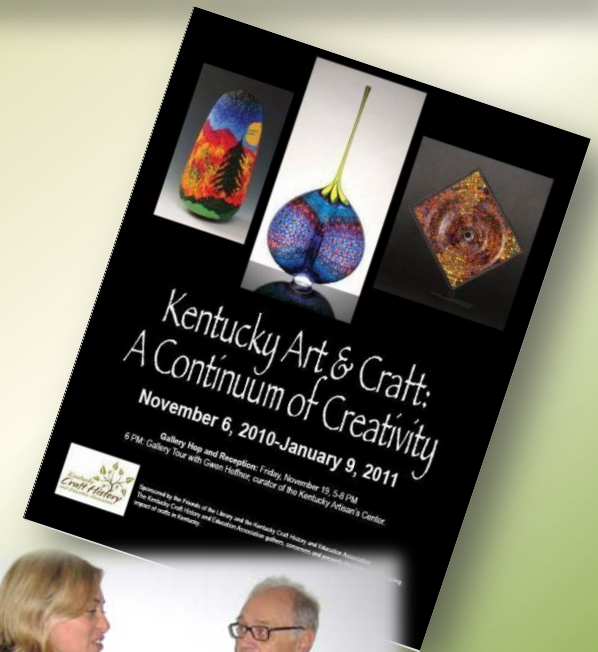
REGISTRATION

NAME: _____ STATE: _____ ZIP: _____
CITY/ORGANIZATION: _____
ADDRESS: _____ EMAIL: _____
CITY: _____
TELEPHONE: _____
Are you representing a group? ☐ Yes ☐ No ☐ Other (please specify) _____
Are you representing a group? ☐ Yes ☐ No ☐ Other (please specify) _____
Please indicate any dietary restrictions: _____
If representing more than one person, please include additional forms or check with information requested.

GOALS

GOAL VI: Present the history of crafts so that all Kentuckians take pride in our long, diverse and continuing craft traditions.

- **Downtown Lexington Library Exhibit** – “Kentucky Art & Craft: A Continuum of Creativity”, was KCHEA’s first public event, featured historic and contemporary crafts.
- **Kentucky Craft Encyclopedia Planning Session** - Featured speaker, Jamil Zinaldin, New Georgia Encyclopedia. Art and history organizational representatives participated in discussions to assist in planning.



Joanna Hay, moderator
and Jamil Zinaldin

Current Challenges/Next Steps:

- **MEMBERSHIP CAMPAIGN** – promote KCHEA and develop long-term support
- **FUNDRAISING** – KCE & Operating Support
- **BOARD DEVELOPMENT** – continue to support mission
- **YOUTH IN LEADERSHIP** – to insure our future
- **EDUCATIONAL OPPORTUNITIES** – utilizing existing resources
- **TECHNOLOGY** – to reach an expanded audience, i.e. social media, etc.



Contact us:

**Kentucky Craft History &
Education Association**

P O Box 22363

Lexington KY 40522

info@kchea.org

Kchea.org

